

# Tallangatta Sewerage System

Revision Date: 23/04/01

## Description of System

The wastewater system comprises:

\* Two gravity catchments served by the Driving Street Pump Station and by Number 1 Pump Station.

\* A treatment plant with components of 1940's and 1950's technology:

- Coarse Screens and inlet channels;
- A primary tank (Birmingham Tank);
- A trickling filter and an unheated sludge digester;
- A 30 day detention lagoon; and
- A land disposal area

EPA Licence No: EW221

Annual Flow: 139.7 ML/year

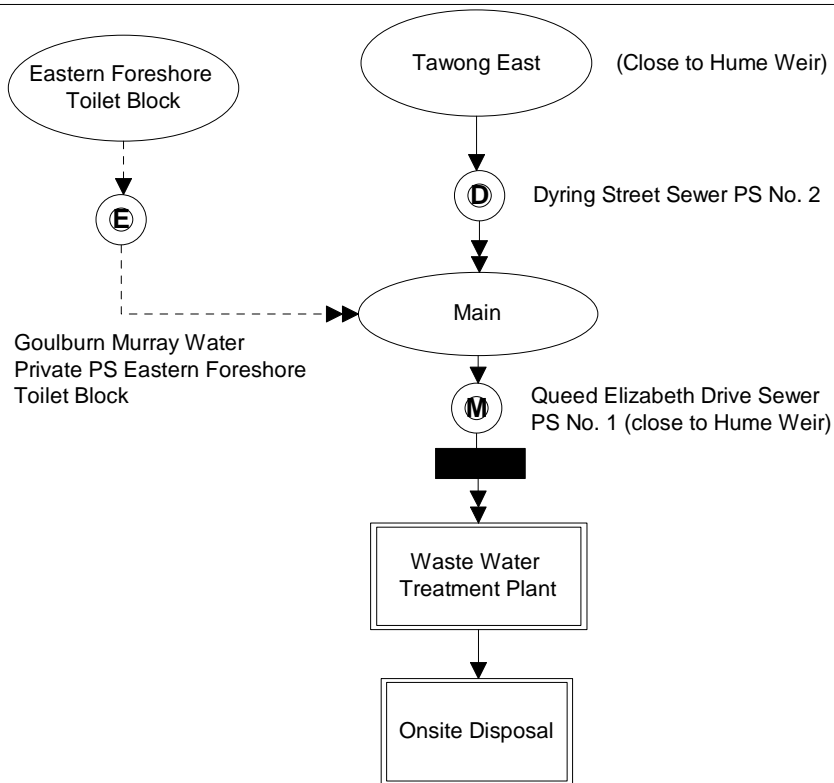
No of Connections

Residential:

Built: 510

Vacant:

Industrial:



Pump	No Pumps	Type	Capacity (L/sec)	Telemetry
D		WW	5	No
E		WW	3	No
M		DW	12	Yes

